

# Research and Development

## Bulletin, May 2018

### Safe effective care through research

#### Neonatal research in the limelight



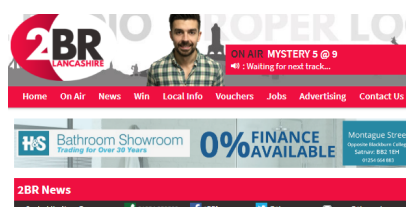
#### Parents' pride at taking part in clinical research to help premature babies



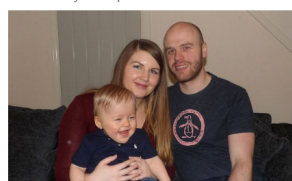
Little battler Harry with his parents Stephanie George and Lee Murdoch

By  
SUSAN PLUNKETT  
Email

Published: 11:04  
Wednesday 14 March 2018



#### Miracle baby takes part in clinical research



6:16am 11th March 2018

An East Lancashire baby's taking part in clinical research.

Miracle baby Harry Murdoch was born at just 24 weeks and five days old in November 2016.



Like Share Send Message \*\*\*

"We're proud of him in every little thing he does, but just to know that he's helping other babies without even knowing it..."

When little Archie Lawrence was born, he weighed no more than a grapefruit and had a 50/50 chance of survival. Now, he's healthy, happy, and helping future generations of premature babies. Here's how: <https://bit.ly/2FsWlHq>

110K Views

The stories of two East Lancashire families, whose babies who were born prematurely and were subsequently cared for in the Neonatal Intensive Care Unit at Burnley General Teaching Hospital, have featured in the local press and on Granada TV. The families described their experiences of taking part in Planet-2, a research study sponsored by NHS Blood & Transplant, which looked at when to give platelet transfusions to premature babies. The stories have done much to raise awareness of research, receiving 110,000 views on the Granada TV Facebook page. We are indebted to the families for their support. We would like to thank both the families and the following people for championing research at ELHT and so generously giving their time: Consultant Neonatologist, Dr Cox, research nurses Emily Andrews and Heather Collier, Steve Whittaker in Trust Communications and David Pickthall, Communications Officer at the Greater Manchester Clinical Research Network, who initiated and developed the stories and secured their publication.

#### In this edition

- Neonatal research in the limelight
- Highlighting the role of the research team
- New recruitment year dawns
- Host of events to celebrate research
- Help BEAT Kidney Disease

#### Contact us

For support and information on research at East Lancashire Hospitals NHS Trust, please contact Research and Development (R&D) Department  
Level 3, Royal Blackburn Hospital  
Tel: 01254 733008  
Fax: 01254 733683  
Email: [research@elht.nhs.uk](mailto:research@elht.nhs.uk)

#### Celebrating research at ELHT

If you'd like to include a story about your research, please contact:  
[hazel.aston@elht.nhs.uk](mailto:hazel.aston@elht.nhs.uk)

## Communication champions highlight the role of the research team



The Research Communication Champions group, which was formed last year, has been busy working to raise awareness of the research activity within the Trust. With the support of the research team, the group has produced 'Meet the research team' posters to display in clinical areas. The aim is to raise the visibility of the research team within the Trust. Members of the group recently delivered an education session for Foundation Year Trainees, encouraging them to get involved and support research. Next on the agenda for the group is a whole host of events over the coming months: International Day of the Midwife, International Nurse's Day, International Clinical Trials Day, The Festival of Learning and NHS at 70!

Pictured L-R: Karen Riley, Bev Hammond, Jillian Fitchett

## New recruitment year dawns

Study recruitment for 2017-18 has now closed. 1860 patients took part in clinical research studies, just short of the anticipated 1904 participants. Although this puts the Trust in amber status, many studies have met target, and many specialities have also met and surpassed their targets. Of particular note was diabetes where 304 patients entered research studies, more than twice the anticipated number.

The time between Confirmation of Capacity and Capability (C&C) being granted and the recruitment of the first participant is an important, reportable metric which impacts on any future funding received. Reducing this timeline is an area to improve in the coming year.

### New recruitment goal: 1828 participants

For the coming year, the aim is to recruit 1828 participants into research studies. Individual speciality targets have yet to be issued. A new spreadsheet for recording recruitment during 2018-19 has been opened. If there are any changes to recruitment targets or end of study timelines please continue to report these to [Research@elht.nhs.uk](mailto:Research@elht.nhs.uk)

## Host of events to celebrate research



International  
Clinical Trials Day  
18<sup>th</sup> May 2018

9-4pm, Main foyer  
Royal Blackburn Teaching Hospital  
12-2pm, Phase 5 entrance  
Burnley General Teaching Hospital

## Festival of Learning

6<sup>th</sup> June, 12-2pm  
Phase 5 entrance  
Burnley General Teaching Hospital  
19<sup>th</sup> June, 12-2pm  
Physio Gym, Level 1  
Royal Blackburn Teaching Hospital



It's a busy year at ELHT and the Research and Development department will seize the opportunity to raise awareness of clinical research and the research activity within the Trust. The research team will be celebrating International Clinical Trials Day on 18<sup>th</sup> May. There will be stands in the foyer at Royal Blackburn Teaching Hospital and in the phase 5 foyer at Burnley General Teaching Hospital. We'll also be visiting wards and departments and have a presence on the Trust's social media channels, letting everyone know that this is a research-active Trust. We'll also be participating in the Festival of Learning with stands at the events in Burnley and Blackburn, highlighting some of the many opportunities to learn about research. If you'd like to contribute ideas and get involved, please contact [Hazel Aston](#).

## Network news

### Greater Manchester to help beat kidney disease



Since 2012, Research for the Future has operated three 'Help BEAT' campaigns in the fight against diabetes, respiratory and heart disease. Supported by the National Institute for Health Research, the campaigns encourage people to register to hear about local research taking place into their health condition and find out how to get involved.

The Research for the Future team launched their fourth campaign, Help BEAT Kidney Disease, on World Kidney Day (8<sup>th</sup> March 2018). Katherine Grady, Research for the Future manager, explains: "People with long-term conditions such as chronic kidney disease (CKD) are often passionate about

understanding their condition and are very willing to help researchers learn more about the best ways of managing it. However, it can be difficult to find out what research is going on locally and how to take part. We are incredibly excited that our Help BEAT Kidney Disease campaign will make it easier for people to access a wide range of research opportunities into their condition. You can find out more about the Help BEAT Kidney Disease campaign and sign-up online at [www.researchforthefuture.org/](http://www.researchforthefuture.org/).

### Improving healthcare through clinical research

The latest edition of this course starts later this month. It's free and runs on-line for 4 weeks, beginning 21<sup>st</sup> May 2018. [To join click here](#)

## Research and regulatory update

### Clinical trial activity associated with reduced mortality and improved CQC ratings

A recently published study shows that NIHR-adopted clinical research activity in NHS Trusts is associated with improved mortality rates and better organisational performance as represented by Summary Hospital-level Mortality Indicator and the Care Quality Commission ratings, respectively. The study looked at data collected across multiple years for both NIHR research activity and mortality rates and controlled for the size of each Trust's workforce. Increased NIHR-adopted clinical trial activity is significantly associated with reduced mortality and with better CQC ratings. In particular, the number of patients taking part in clinical trials correlates with improved hospital performance. The link between clinical trial activity and quality is not related to the size of the NHS Trust. For more information visit the [RD forum](#).

Jonker L, Fisher SJ. The correlation between National Health Service trusts' clinical trial activity and both mortality rates and care quality commission ratings: a retrospective cross-sectional study. *Public health*. 2018 Apr 1;157:1-6.

### What the public thinks of research

The Health Research Authority and the National Institute for Health Research have worked together on a detailed study of what the public thinks about health research. Using face-to-face interviews, they gathered the views of one thousand people on a variety of health research topics. The report 'Survey of the general public: attitudes towards health research 2017' documents that 83% people think health research is very important and half of those interviewed thought patients receive a better quality of care at hospitals that also carry out research. The study found that 83% people have confidence taking part in health research knowing it has been reviewed by a research ethics committee and that 80% people are confident their personal data would be held securely if they took part in research. However, there are some negative perceptions of research associated with educational level, lower socio-economic group and ethnicity that need to be addressed.

### New system supports national data opt-out

NHS Digital is developing a new system that people can use to opt out of their confidential patient information being used for reasons other than their individual care and treatment. It will be secure and accessible, and will be available from 25 May 2018. The system will support the national data opt-out and offer patients and the public the opportunity to make an informed choice about whether they wish their personally identifiable data to be used just for their individual care and treatment or also used for research and planning purposes. For [more information click here](#)