

# Holly House

Child Development Centre

Information for Young People,  
Parents and Carers

Specialist  
Sensory  
Garden

Bright  
Stimulating  
Soft Play  
Room

Specialist  
Therapy  
Sessions



East Lancashire

Community Neurodevelopmental Paediatrics

# What are we?

Holly House Child Development Centre is a multi disciplinary Therapy Centre for children & young people from 0–5 years with developmental difficulties or disability.

## WHAT DO WE DO?

The services we provide for assessing and assisting children's development include:

- Multi-disciplinary assessment of pre-school children
- Pre-school Individual & small group therapy sessions/appointments
- Home Visits
- Parental support for children with developmental difficulties
- Opportunities to meet other parents with similar experiences.

## Who you might meet at the Holly House?

All children who attend will be under the care of a Consultant Community Paediatrician, who will refer your child to the service.

### Holly House Staff include:

- Administrator
- Specialist Health Visitor
- Children's Nurse
- Early Years Development Practitioners
- Paediatric Clinical Support Worker

### Other professionals who may be involved:

- Physiotherapists
- Speech & Language Therapists
- Occupational Therapists
- Psychology • Genetics
- Orthotist • Nursery
- Health Visitors
- Portage

The team of various professionals work alongside families to help support them in understanding and managing their child's condition.

**Bright  
Stimulating  
Soft Play  
Room**



**Specialist  
Sensory  
Garden**

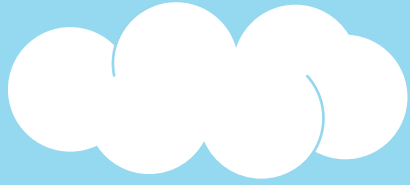


**Specialist  
Therapy  
Sessions**

## **Mission Statement:**

Holly House will provide a family centred, high quality service for children who have developmental difficulties.

All children will be respected as individuals and each child will be assisted and encouraged to reach their full potential with input from experienced specialist professionals.



**Email:**

Holly House.CDC@elht.nhs.uk

**Address**

Holly House  
Child Development Centre  
At Acorn Primary Health  
Care Centre  
421 Blackburn Road  
Accrington  
BB5 1RT  
Tel: 01254 736232

